

Quiz Me!

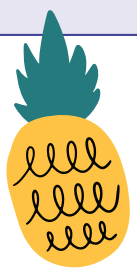
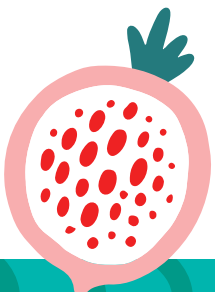
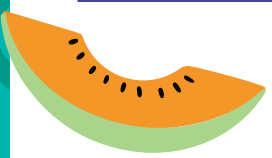


Telethon Kids researchers use data and analysis to find solutions and understand information. One of the ways they do this is by asking research participants questions through surveys to learn more about them. By asking lots of people the same questions in a survey, researchers can study the information gathered to find solutions to problems.

In this activity, you are going to play the role of a researcher and conduct a survey to find out the answer to the question:

WHAT IS THE MOST POPULAR FRUIT?

NAME	WHAT IS YOUR FAVOURITE FRUIT?



An important part of being a researcher is to be able to communicate the results of your research to others. You can present the results of a survey in many different ways. A graph is a useful tool which lets you display the information as a visual image.

Use the information from your survey to complete the bar graph below. Remember to give your bar graph a title!



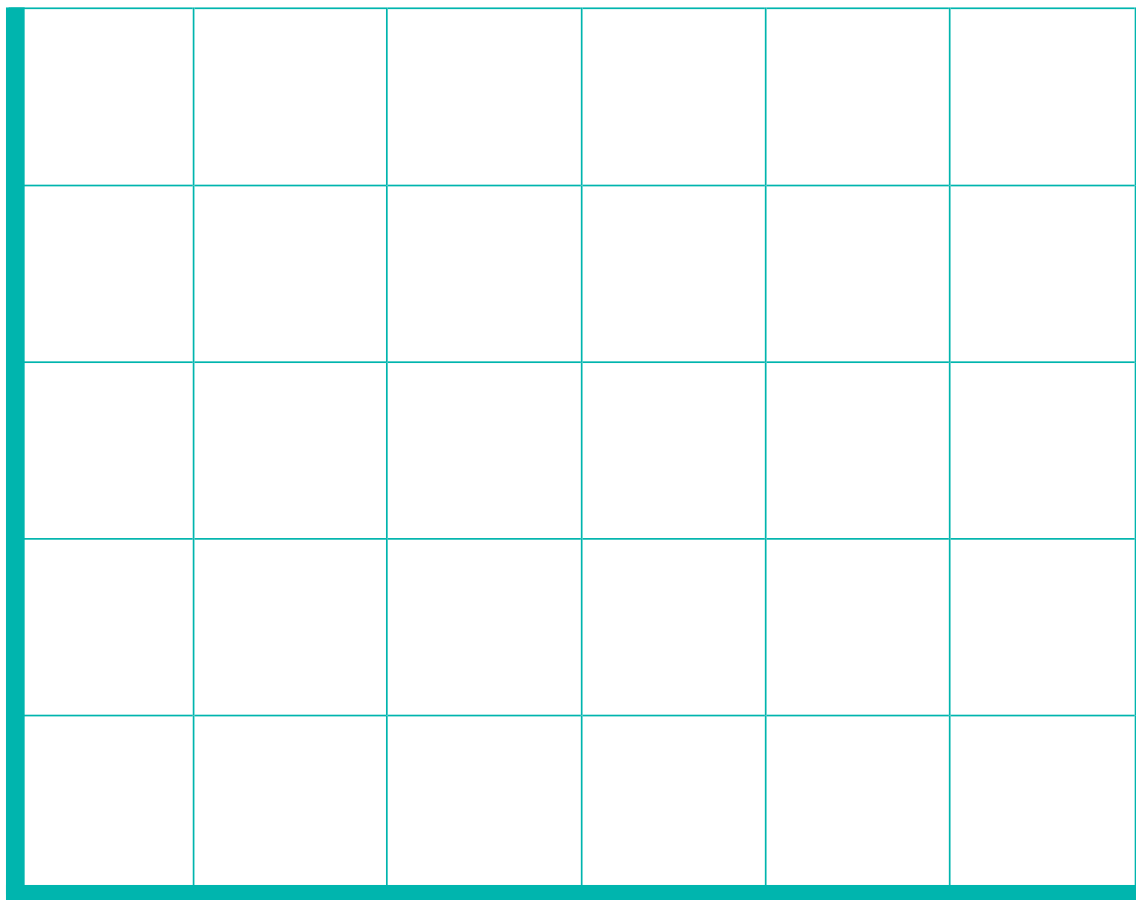
TITLE



.....

NUMBER OF PEOPLE

10
8
6
4
2



--	--	--	--	--	--

FAVOURITE FRUITS



GLOSSARY

- **data:** information collected through research
- **analysis:** carefully studying something so that you understand it
- **research participants:** people who take part in research
- **surveys:** asking people questions to find out more about something

